



## Specification

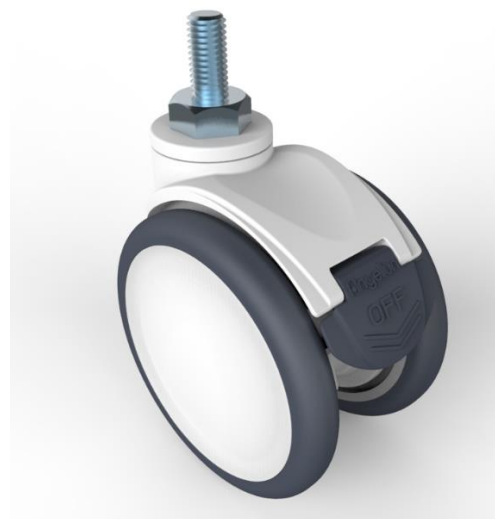
RD-100B-WG-M12X25

100mm Double wheel caster, threaded stem

This model without brake , fix by threaded stem

The main frame of caster is made of PA6 nylon, and the core of caster is made of PP material and TPE material with outstanding cushioning performance are used for wheel surface.

The inside of caster is equipped with double precision bearing, which makes the walking more stable and the braking easier.



### Technical Data

Wheel Diameter	100mm
Tread Width	13.8mm
Caster Width	68mm
Stem diameter	M12
Stem length	25mm
Offset	31mm
Swivel Radius	82.5mm
Swivel interference	165mm
Overall height	124mm
Temperature	-30/+80°C
Standard	EN12531
Weight	0.8KG
Dynamic load capacity	80KG
Static load capacity	100KG

